

Transmitter

General

HTW-11-U20-WF Series can replace most common residential thermostat and is designed to be used for electric, gas or oil heating control system. Unlike ordinary single unit design thermostat, this unit is a new type of thermostat separating the thermostat function into two units including transmitter and receiver with RF+WiFi communication.

Features

- Control from anywhere Via WiFi.
- Up to 100m active between Transmitter and Receiver via RF.
- Displays set-point+ room temperature+time simultaneously
- Permanent user setting and program setting retention after power failure
- Vacation mode and hold duration mode available for comfort and energy saving
- 7 day/5+2 Schedule
- Low battery indication
- Anti-freezing protection
- Pump protection available

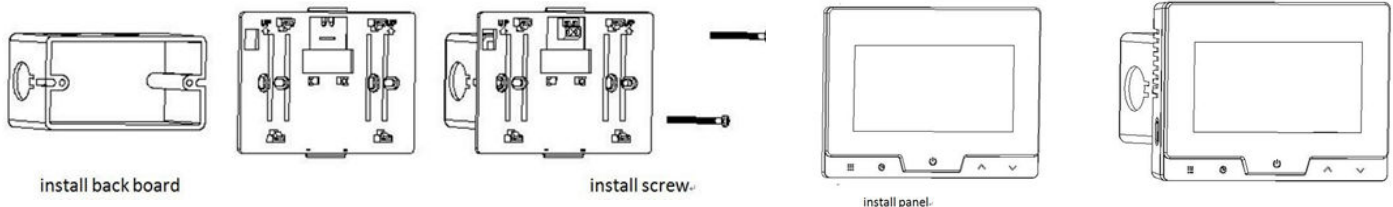
Specification

Power supply	4 AAA batteries, USB power supply
RF Frequency band	868MHZ
Set-Point range	5°C~35°C
Temperature accuracy	±1°C
Operating temperature	0~50°C
Humidity range	90% non condensing
Storage temperature	-20~65°C
Dimensions	124*88*21mm
Installation	Wall Mounted/86 Junction Box/American Junction box

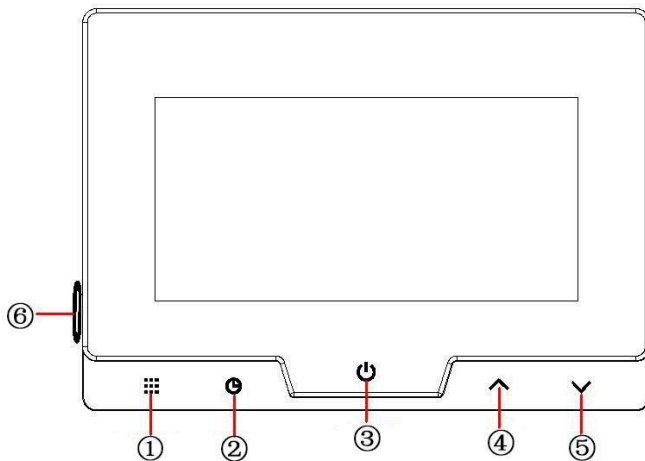
Installation



- Always turn off power at the main power source by unscrewing fuse or switching circuit breaker to the off position before installing, removing, cleaning, or servicing this thermostat.
- Read all of the information in this manual before installing this thermostat.
- Only a professional contractor should install this thermostat.
- All wiring must conform to local and national building and electrical codes and ordinances.
- This thermostat has a removable fuse to protect the system from damage. If system is not operating properly, check wiring and replace fuse if necessary.
- Use this thermostat only as described in this manual.



Keypad Operation



① Menu button

During power on status or program mode, tap button to switch between programmable mode or Temporary hold(Manual) mode; Hold button more than 3 seconds to enter program setting, tap or to adjust parameters, tap to exit

② Time setting button

During running mode, tap to enter time setting tap again to set Minute, press or to adjust minute. Press to confirm and exit, tap again to set Hour, press or to adjust hour. Press to confirm and exit, tap again to enter Week adjustment, press or to adjust week, Press to confirm and exit.

③ Power \Confirm button

- In setting mode(program setting mode, menu setting mode, time setting mode) tap to confirm and exit.
- In normal boot working status, tap and hold button for 3 seconds to turn off, In normal shutdown state, tap button to turn on.
- When the thermostat is in power saving(screen no display), tap button to wake.

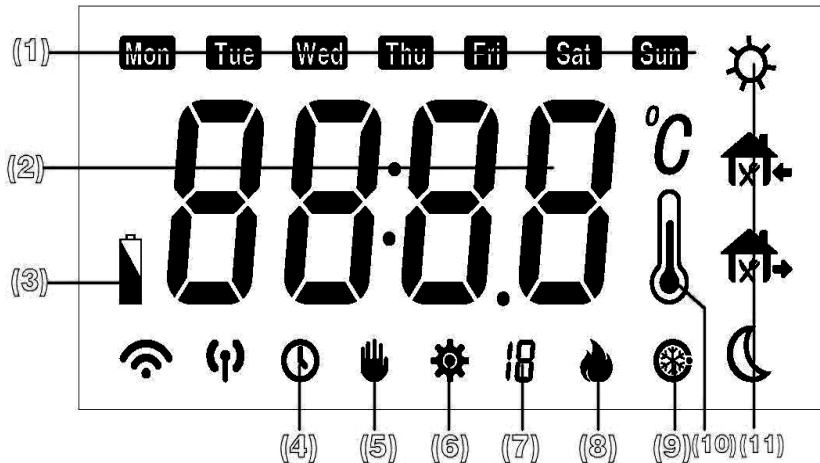
④ ^Parameter increase

⑤ vParameter decrease

⑥ Wake up button

When the thermostat is in standby mode(no display), all keypads are invalid until pressing wake up button to activate., the thermostat switches to standby mode if no buttons tapped after 5 seconds

Display



- (1) Week
- (2) Time/OFF\ Temperature
- (3) Low battery indicator
- (4) Time shows/Running mode, (4) and (5) appear simultaneously means temporary mode.
- (5) Manual Mode
- (6) Setting icon(Parameters, programming, time)
- (7) Parameters or programming
- (8) Output indicator
- (9) Anti-freezing mode
- (10) Programming period indicator

Parameter Configuration

Step	Press buttons	Displayed (factory default)	Press ▲、▼ to select	Descriptions
1	⏏	⚙️ 1 (0)	-4 — +4	Select temperature display adjustment higher or lower
2	⏏	⚙️ 2 (35°C)	24°C—35°C	Select maximum room temperature limitation
3	⏏	⚙️ 3 (5°C)	5°C—20°C	Select minimum room temperature limitation
4	⏏	⚙️ 4 (0.5°C)	0.5°C~5°C	Start heating conditions: when setting temperature \leq room temperature-0.5 °C , stop heating, when setting temperature \geq room temperature reduction db parameters start heating
5	⏏	⚙️ 5 (0)	0/2/3/7	Programme option 0: Non programmable 2: 5+2 (Refer to table Three 、 table Six) 3: 5+1+1 (Refer to table Two 、 table Five) 7: 7 days (Refer to table One 、 table Four)
6	⏏	⚙️ 6 (4)	4/6	Programming period in one day option 6-6 time zones: 4-4 time zones;
7	⏏	⚙️ 7 (OF)	On/ OF	Frost protection On: Frost protection on; OF: Frost protection off
8	⏏	⚙️ 8 (10)	10/15/20	Display Time: The unit is second
9	Short press ⏏ button confirm and back to programming running mode			

In standby mode, tap and hold ⏏ button more than 3 seconds to enter the 1st configuration menu setting.

Tap ▲ / ▼ to adjust parameters.

Tap ⏏ button again to switch to next item, tap ⏏ button to confirm and return to standby mode.

If no button tapped within 10 seconds, the thermostat will automatically exit configuration setting and back to standby mode.

Transmitter

Specification

Power supply	100-240VAC 50/60Hz
RF Frequency band	868MHZ
Wireless signal effective range	100m
Temperature accuracy	±1°C
Operating temperature	0~50°C
Humidity range	90% non condensing
Storage temperature	-10°C~60°C
Dimensions	86×86×24.4mm

Installation

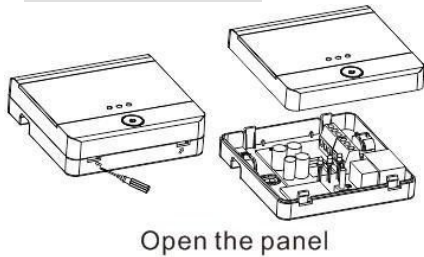


- Always turn off power at the main power source by unscrewing fuse or switching circuit breaker to the off position before installing, removing, cleaning, or servicing this thermostat.
- Read all of the information in this manual before installing this thermostat.

- Only a professional contractor should install this thermostat.
- All wiring must conform to local and national building and electrical codes and ordinances.
- This thermostat has a removable fuse to protect the system from damage. If system is not operating properly, check wiring and replace fuse if necessary.

Use this thermostat only as described in this manual.

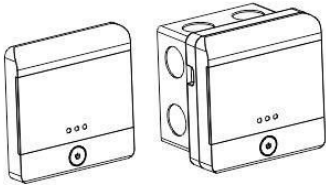
Installation Setps:



Open the panel

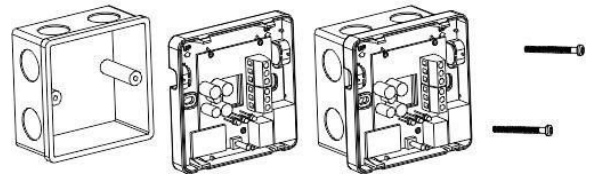
1. Remove the screw from the bottom of thermostat. Gently pull the control panel straight off the base. Forcing or prying on the thermostat will cause damage to the unit.
2. Connect wires beneath terminal screws on power supply module using appropriate wiring schematic. Push power base into 86mmX86mm junction box.

3. Use two mounting screws mount the wire-connection plate to the wall.



Install the panel

4. Replace transmitter on the power base by snapping it in place.



Install the base

Mounting screws

Wiring Diagram

