

HTW-61-FC002/T8000 Touch Screen Thermostat

Reference No.:HTW-61-FC002

Application

HTW-61-FC002 Touch screen thermostats are designed to control heating, cooling, or year round air conditioning unit in Commercial, Industrial and Residential Installation. Typical applications include the control of fan coil units, packaged terminal air conditioners and combination of heating and cooling equipment. As part of the system, T8000 controls a two-way or three-way valve and a multi-speed line voltage fan.

HTW-61-FC002 Touch screen thermostat is applicable to the two-in-one system of central air- conditioner and floor heating. In summer, comfortable environment is reached by controlling the fan coil of air conditioning system with local temperature. In winter, both warm air from air-conditioner and floor heating are available for quick heating.

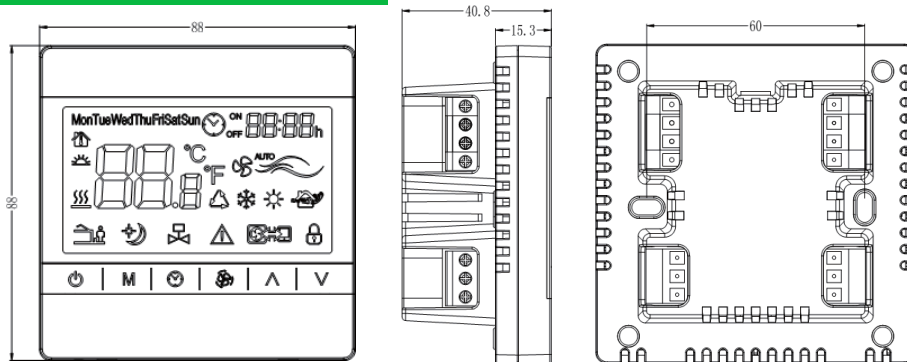
HTW-61-FC002 features with microcomputer control, large LCD screen display, and displays the status of work mode (cooling/floor heating/heating/floor heating&heating/air venting), fan speed, indoor temperature and set temperature etc.. Capacitance touch screen enhances the fluency on operation. Keypad includes: Power on/off (⏻), Mode selection (M), Fan Speed selection (⚙️), Clock/Timer (🕒) and two Adjustment buttons (⬆️/⬇️).



Features and Benefits

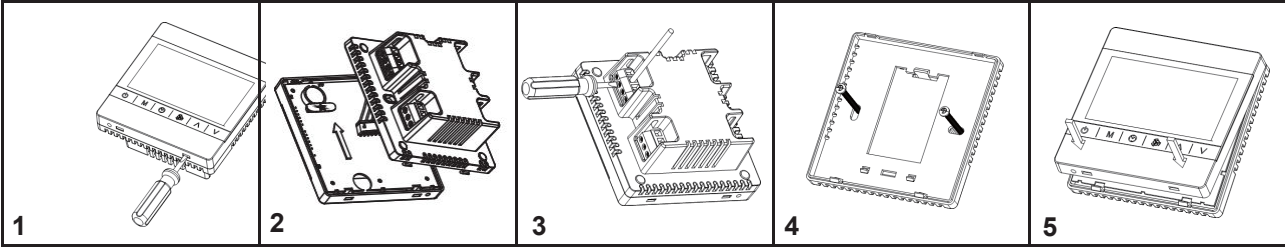
Touch screen	<ul style="list-style-type: none"> Capacitance touch screen enhances the fluency on operation
Backlit Liquid Crystal Display (LCD)	<ul style="list-style-type: none"> Offer Easy-to-Read Real-time control status of the environment, graphical messages with constant backlight that brightens during user interaction
6 Function Keys	<ul style="list-style-type: none"> All-in-One location function keys, simplified user to change the setpoint and parameter Molded Industrial Standard Graphical Symbol
Appearance	<ul style="list-style-type: none"> Attractively-Style Twin-Ring Streamline ABS Plastic Cover and Base All-in-One Enclosure Design without Protrusion of Power Circuit
Energy Saving	<ul style="list-style-type: none"> Features with Unoccupied Function Requires no batteries; EEPROM retains the last events and parameter settings after a loss of power
Installation, Service and Maintenance	<ul style="list-style-type: none"> Universal Mounting with Standard Wall Box Quick Replacement to reduce to Downtime of Service Maintenance

Dimensions



Installation

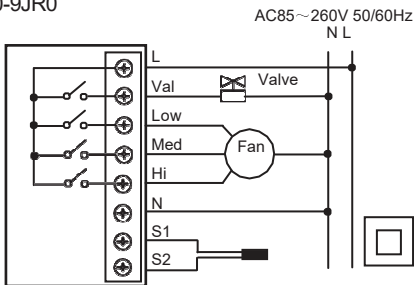
T8000 thermostats allow for 75 x 75 x 35mm standard wall box installation.



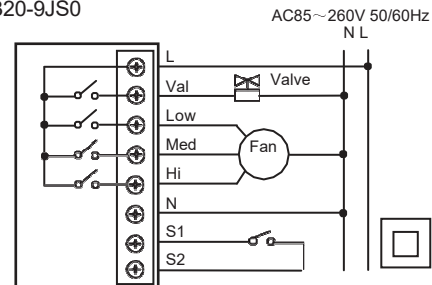
* Remove the insulating strip before installation

Wiring Diagram

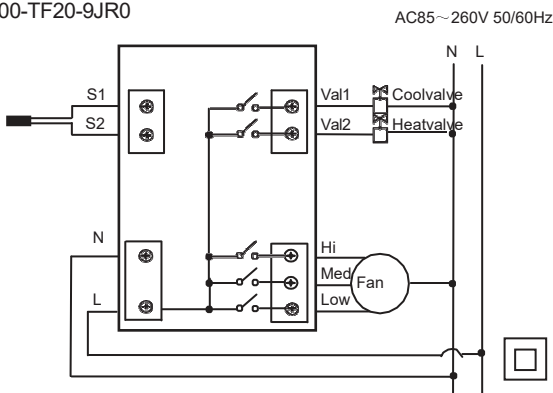
T8200-TB20-9JR0



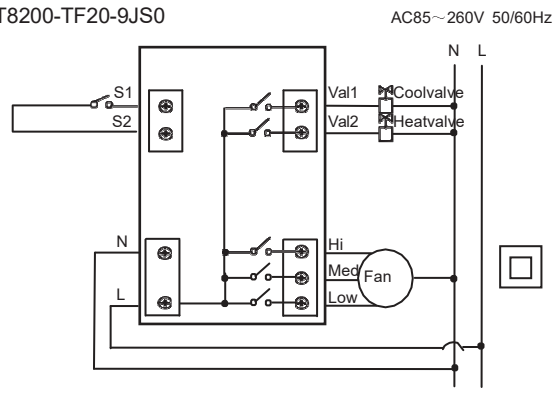
T8200-TB20-9JS0



T8200-TF20-9JR0



T8200-TF20-9JS0



Specification

Power Requirements	AC85-260V 50/60HZ (T8200-TB20...T8200-TF...) AC24V 50/60HZ optional						
Accuracy	±1°C	Display Range	0~55°C	Setpoint Range	5~35°C		
Unoccupied Mode	T8200...9JS0 External Voltage-Free Contact Input Signal						
Remote sensor	T8200...9JR0 with remote temperature sensor NTC 10K, 1.5 m, Max.20m (0.7 ~1.0mm ²)						
Termination	Screw terminals						
Fan Control	3 x Single-Pole, Single Throw (SPST) , 5A (Res.) at 250 VAC (Maximum); Relay Output for High-Med-Low Fan						
Ambient Operating Conditions	0 to 45°C 90% Non-condensing RH						
Ambient Storage Conditions	-10 to 60 °C 90% Non-condensing RH						
Housing Material	PC: UL 94-V0						
Protection Class	IP20	Certification	CE	Dimensions	88 x 88 mm	Weight	Appr.214g